

Bluetooth APP Instruction

Download and install the APP application to the mobile device

1.Download,install and open eHealth APP by scanning the QR code below with your Android phone /iPhone or by searching the keyword eHealth or e-Health in App Store.

2.Please update the existing App on your phone to the latest version.



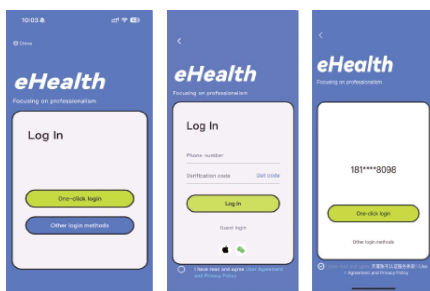
3.After the installation,the following icon will appear in the mobile app or desktop.



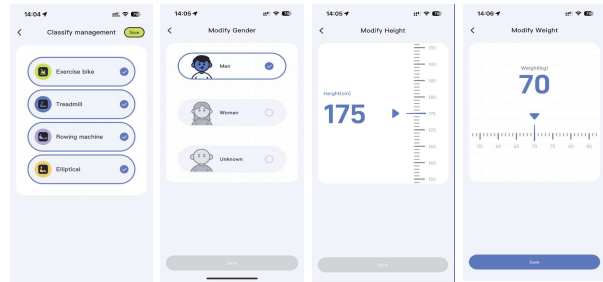
Device connection

1.Enable the Bluetooth function of the mobile phone and ensure that the mobile phone network is unblocked
Login and registration method

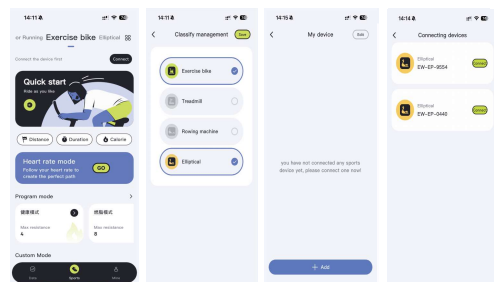
- Mobile phone number one click login registration
- Mobile phone verification code login and registration
- Visitor login
- Log in and register with third party accounts(wechat)



2.Parameter setting:login and register successfully;Select one or a variety of of devices;Click next to switch to the page of selecting gender” male” or” female” ;Click Next,slide to select height;Click Next, slide to select weight.



3.Manually search on the elliptical machine interface and select the Bluetooth number starting with “EW-EP” for connection.After successful connection,select the required mode for training.



Device can't connect?

1.If you can't connect or can't search the Bluetooth number,first confirm whether the function is available;Secondly,check whether the device type is selected correctly;Finally,to check whether it is occupied by other mobile phones,please ask the person who has just connected the device to turn off the Bluetooth and wait for 2 minutes to scan the code and connect again.

2.Confirm whether eHealth APP is installed on the phone.If yes,uninstall it and re-install it by scanning the code.

Friendly reminders

In order to provide a better experience,eHealth APP will be upgraded regularly,so the user interface will change.

If any discrepancies are found between the system and the manual during use, please feel free to contact us.

If it has not been used for a long time,please turn off and unplug the power.